



“

WE FOCUS
ON HEALTH
CARE PRODUCT

GROUP ALPHAY

JIANGSU ALPHAY MEDICAL DEVICE CO., LTD.

ADD: 95 Zhenxing Road, Nantong, Jiangsu, China

Mob: +86 15190986500

Tel: +86 513 85989732

Fax: +86 513 85921705

Email: sales@alphaymedical.com

Website: www.alphaymedical.com; www.alphay-med.com



Alphay

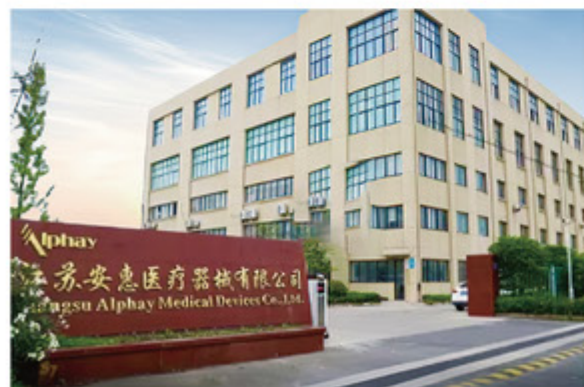
JIANGSU ALPHAY MEDICAL DEVICE CO., LTD.

JIANGSU ALPHAY INTERNATIONAL CO., LTD.

JIANGSU ALPHAY BIOLOGICAL TECHNOLOGY CO., LTD.

ALPHAY INTERNATIONAL INC. (USA)

COMPANY PROFILE



JIANGSU ALPHAY Medical Device Co., Ltd. was founded in 2006 and is a technology-based enterprise dedicated to the R&D, production, and sales of health and medical products. It is located in Nantong City, which is thriving and known as the "Northern Shanghai". After more than ten years of development, ALPHAY Medical has created two major product lines, namely household massagers and household medical braces. We focus on the treatment and massage of bone disease-prone areas such as the waist, neck, and knee joints, in order to provide assistance to those who suffer from pain. Fortunately, we have achieved this goal.



Semi-automatic production line



Inspection department



Warehouse



WE insist on originality, and all the products are the result of the hard work of R&D team. We have been tirelessly developing new products while our existing successful products are selling well, constantly injecting new blood into our product line. We attach great importance to the protection of intellectual property rights and have as many as 80 domestic and foreign patents. We believe that quality, safety, and management are the three essential elements of a successful enterprise. Based on this, we have obtained quality management system certifications such as 1S09001, IS013485, completed FDA registration, and passed product safety certifications such as CE, ATGA, IEC, etc.

In the future, ALPHAY Medical is confident in providing customers with more professional, more convenient, and more trustworthy services. In doing business, it is important for us to make friends from all over the world and share successful experiences with each other.

HONOURS

Quality

Management system certification



80+

Patents



40+

Quality and safety certification



CONTENTS

01



MASSAGE PRODUCTS

- 07-09 LUMBAR TRACTION DEVICE
JKAH-2J/T
- 10-11 LOWER BACK STRETCHING MASSAGER
JKAH-2F
- 12-13 LUMBAR TRACTION DEVICE
JKAH-2
- 14-15 LUMBAR TRACTION DEVICE
JKAH-2Y/T
- 16-17 BACK MASSAGE BELT
JKAH-10A
- 18-19 CERVICAL CARE DEVICE
JKAH-12A
- 20-21 NECK AND SHOULDER MASSAGE PILLOW
JKAH-3C
- 22-23 CERVICAL CARE MASSAGER
JKAH-3
- 24-25 SMART NECK MASSAGER
JKAH-5
- 26-27 AIRWAVE JOINT MASSAGER
JKAH-1G
- 28-29 KNEE CARE MASSAGER
JKAH-1/JKAH-1/S

02



MEDICAL DEVICE SERIES

- 31-32 NECK SUPPORT
JGAH-5
- 33-34 NECK TRACTION DEVICE
JGAH-2F
- 35-36 NECK TRACTION DEVICE
JGAH-2E
- 37-38 NECK TRACTION DEVICE
JQAH-6 /JQAH-8
- 39-40 NECK TRACTION DEVICE
JQAH-3B /JQAH-4B
- 41- BACK SUPPORT BELT
YGAH-6/ YGAH-8
- 42- AIR TRACTION BELT
YGAH-9
- 43-44 AIR TRACTION BELT
YGAH-1/ YGAH-2/ YGAH-3

MASSAGE PRODUCTS



Lumbar Traction Device

JKAH-2J/T

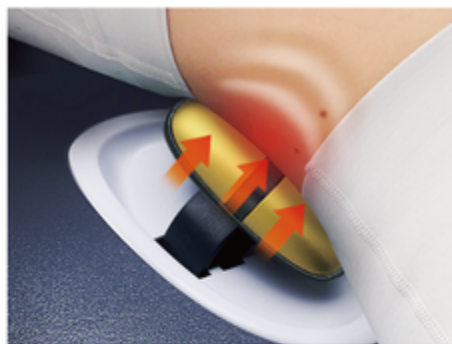
The main functions of this lumbar traction device are dynamic traction, heating therapy, Acupressure massage and EMS massage. Acupressure massage and EMS massage can deeply relax muscles, while heating therapy can relieve muscle tension and accelerate blood circulation. Under dynamic traction, the lumbar spine is repeatedly pushed up and down to continuously perform training along a healthy physiological curvature, restoring the vitality of the lumbar spine and back muscles.



MAIN PARAMETERS:

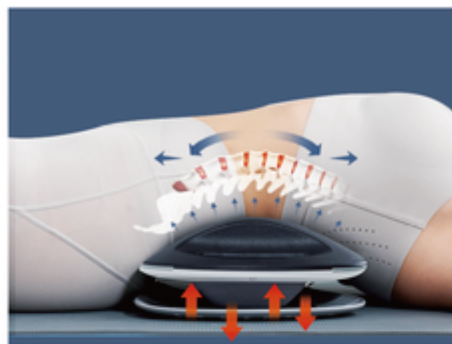
Rated voltage	7.4V
Rated power	12W
Charging voltage	5V
Charging current	2A
Battery capacity	3000mAh





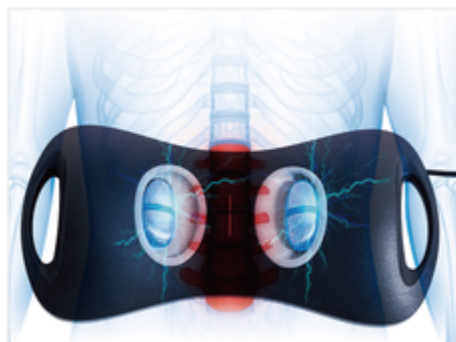
Dynamic pressing of lumbar muscles

Using the latest generation of independently developed technology, the left and right lumbar muscles are dynamically pressed to release the "sore points" caused by labor strain, providing deep and soothing relief between tension and relaxation.



Overall pneumatic lifting of the lumbar spine

Under the lumbar region, continuous reciprocating air pressure lifting is performed to drive the lumbar spine to move back and forth, allowing the lumbar spine to stretch and elongate. This product can adjust the height of the lumbar lift through manual control, or one-key automatic reciprocating lifting can be initiated for lumbar training.



Combined low-frequency pulse

The product is equipped with two sets of low-frequency pulses, it can form a variety of different pulse combinations and move within a certain range, which can expand the stimulation area of low-frequency pulses to the muscles, further improve the massage effect, and bring a more comfortable and comprehensive experience.



Constant-temperature heating

With 3 levels of intelligent heating, heat is evenly transmitted to accelerate local blood circulation. Under a warm environment, lumbar exercises can be performed to further relieve lumbar pain.



Wireless design

Built in lithium battery, rechargeable. Portable, can be used anytime and anywhere.



All-in-one mode

All-in-one mode is the real Gamechanger! Combine all functions at once. Easy operation.



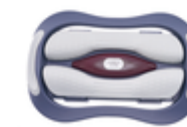
Lower Back *JKAH-2F* Stretching Massager

Different from traditional waist stretching products that move up and down in a straight line, we aim to design a new way to meet the diverse needs of different people's waist experiences. This stretching and relaxing waist massager uses finely tuned flipping and pulling bars to lift the waist while stretching the spine, combined with red light therapy and heat therapy, making it a star product that combines innovation and practicality.

MAIN PARAMETERS:

Material	Color	Main Voltage	Current	Power
ABS+PC	Black or customized	12v	2A	24W

More configurations and colors customization (MOQ required)



Light blue-grey



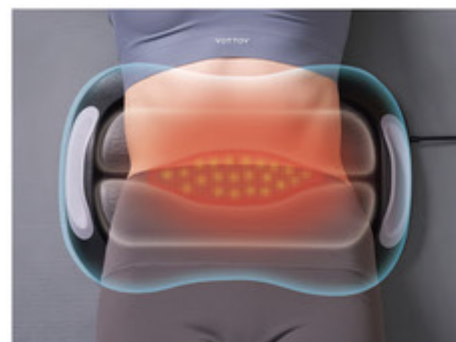
Black-grey





Dynamic top pushing and stretching of the lumbar spine

Dynamic top pushing and stretching of the lumbar spine relax the lumbar spine, relieve lumbar pain, and release muscle fatigue in the lower back.



Constant Temperature Heat Therapy

The lumbar spine loves warmth and dislikes cold, and heat therapy can protect and warm the lumbar spine. It's as comfortable as placing a hot towel on your waist. With three adjustable temperature levels and an NTC safety temperature control system, you can enjoy a comfortable and safe heat therapy for your waist.



Red light therapy

Combining light and heat to irradiate the lumbar region, promoting blood circulation and relaxing tense muscles, alleviating back pain, and gently releasing fatigue.



Multi-frequency vibration

Vibration massage in the core area of the waist, with three adjustable levels, from shallow to deep, to meet different needs, to loosen and relieve pressure and fatigue in the waist and back, making you feel relaxed and refreshed.



Diagram of stretching the lumbar spine



Lumbar Traction Device

JKAH-2

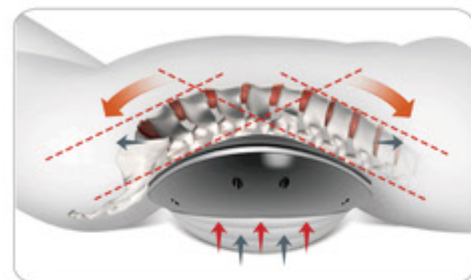
Lower back massager, patented at the beginning of 2017, is a heated training massager for the lumbar. Different to traditional devices, there is an air traction system integrated in the device. It's designed to provide continual training for lower back muscle and lumbar in warm and vibrating condition.

MAIN PARAMETERS:

Material	Color	Current	Main Voltage	Power
ABS+PC	Black or customized	2A	12V	24W

More configurations and colors customization (MOQ required)





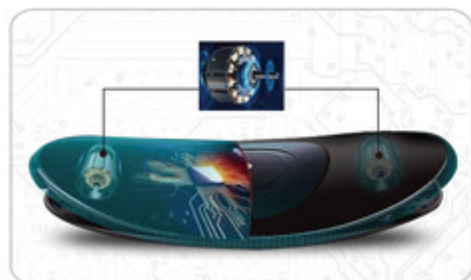
Intelligent dynamic traction

Your own body weight works with the cycling air traction system to stretch lumbar and tight muscles. The unit can inflate manually to help achieve the desired stretch or rotate through two automatic settings.



Heating therapy

With 3 levels of intelligent heating, heat is evenly transmitted to accelerate local blood circulation. Under a warm environment, lumbar exercises can be performed to further relieve lumbar pain.



Double motor vibrating massage

The excellent design of vibratory massage system can let your lumbar be wrapped by soft and comfortable power quickly to relieve your lower back pain. We use double motor to get the appropriate massage frequency which can activate your waist point perfectly. You can feel a healthy life brought by technology home.

MORE ITEMS



Standard



Magnet



Extra large



Lumbar Traction Device

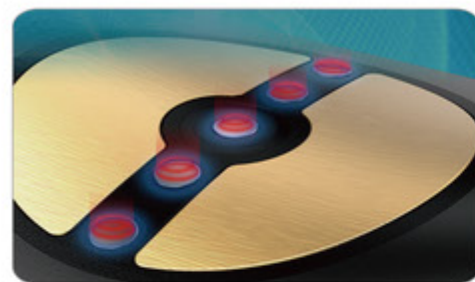
JKAH-2Y/T **Upgraded version**

This product is the third generation of lumbar massager, with the addition of EMS and upgraded intelligent temperature control system based on the first two generations of products. In addition, it has five magnetic stones added to provide consumers with a better massage experience during waist training.



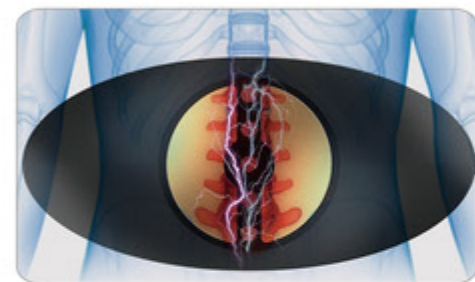
MAIN PARAMETERS:

Material	ABS+PC
Color	Black or customized
Current	2A
Main Voltage	12V \equiv
Power	24W



Magnetic stones improve circulation

The five magnetic stones are located on the L1-L5 lumbar vertebrae, which can adjust the body's bio-magnetic field, relieve lumbar pain, and provide cumulative benefits with their magnetic effects.



EMS

The large-area EMS are transmitted more delicately. With the combination of pulse massage in a warm environment, it relaxes the nerves and relieves fatigue. You can feel every inch of your muscles dancing, making them feel tingly and releasing the tiredness.

- Intelligent dynamic lifting
- Dual-motor vibration massage
- Heating
- EMS electrical pulse therapy
- Wireless design with lithium battery



Multi-site EMS



Arms



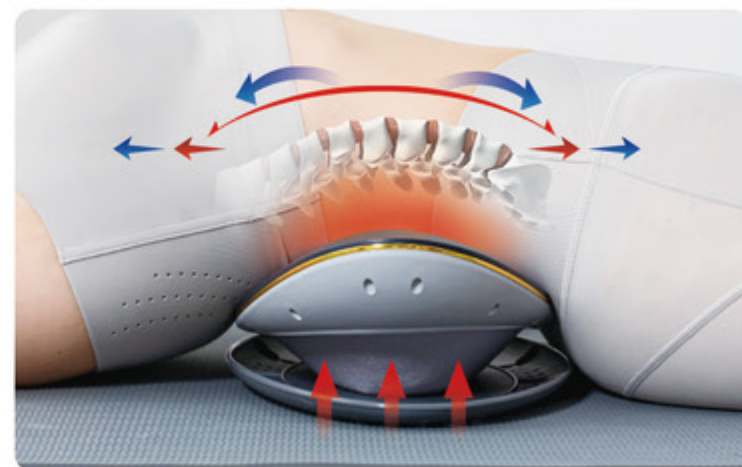
Shoulder



Back



Legs



Back Massage Belt

JKAH-10A

According to the ergonomics principles, this back massage belt adopts a design that conforms to the curve of the human lumbar spine in order to achieve split massage for different areas of the waist. For the broad and thick back muscles, strong pressure kneading massage is used to deeply relax the muscles. For the soft side waist, use softer airbags to air compress massage to enhance comfort.



MAIN PARAMETERS:

Rated voltage	3.7V
Rated charging voltage	5V
Battery capacity	2000mAh
Cycle	timed for 15 minutes

More configurations and colors customization (MOQ required)



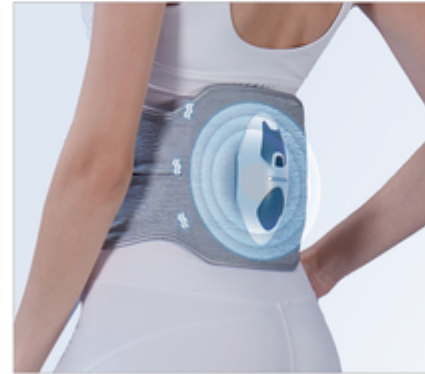
black





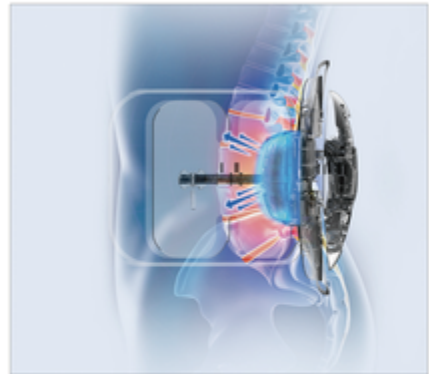
Dynamic Back Kneading

Provides dynamic kneading on the lumbar back, gradually increasing intensity to precisely relieve tension points, effectively soothing muscle soreness.



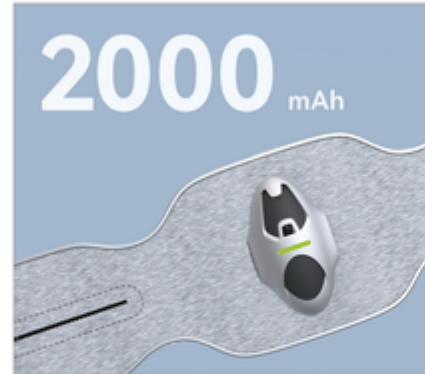
High-Frequency Vibration Massage

Equipped with a custom high-speed motor with a rotation speed of up to 7,400 RPM, offering multi-rhythm high-frequency vibrations to enhance the massage effect.



Smart Side Waist Compression

Promotes blood circulation, relieves muscle stiffness and waist pain, reduces pressure on the lumbar spine, and helps to relax the body and mind.



Lithium Battery Design

Powered by a 2000mAh lithium battery, eliminating battery life concerns. It can be used in various settings, allowing you to enjoy a relaxing waist massage anytime, anywhere.



Cervical Care Device

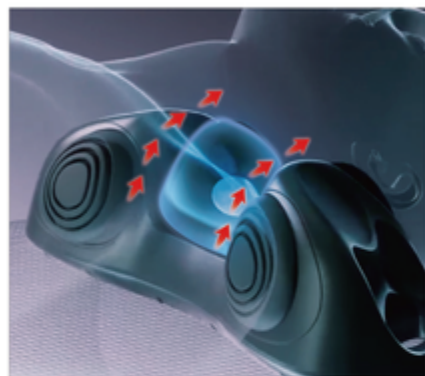
JKAH-12A

The cervical care device employs advanced intelligent control to replicate professional massage techniques, integrating red light therapy, heat application, and air pressure stretching. It assists users in maintaining optimal posture during the massage, thereby effectively alleviating tension in the neck and shoulder muscles.



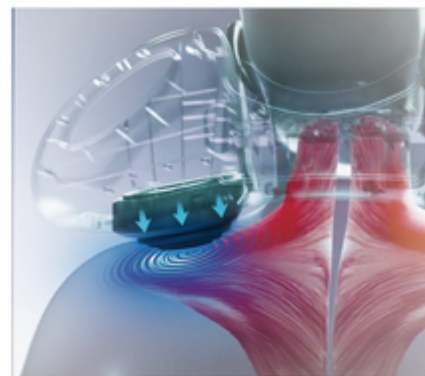
MAIN PARAMETERS:

Output	Power	Charging Voltage	Charging Current	Battery Capacity
7.4W	7.5W	5V	3A	3000mah



Dynamic stretching

In ergonomic design, the device effectively supports and stabilizes the cervical vertebrae. During massage, the neck-support module tilts backward to gently stretch and relax the neck. The principle is to separate the vertebrae, reducing pressure on surrounding tissues. By two modes of the extending and retracting the cervical spine, the device help to restore the physiological curve and promotes relaxation.



Airbag dynamic compression

The soft material used for the function provides a balanced massage force and comfort. When the airbag attached to the shoulder and starting to be inflated, it generates a force that tilts the device back at an angle, gradually stretching the neck. During inflation and release cycles, the air bag repeatedly presses the shoulder, relaxing neck muscles.



Red light hot compress

The device uses medical-grade red light with a 660-940nm wavelength to help users reduce inflammation. The red light heating effectively enhances comfort during massage, relaxes muscles, dilates blood vessels, and improves circulation, reducing pain.



Lithium battery design

Employ a 2500 mAh lithium battery to significantly mitigate concerns over battery life. This advanced power solution ensures sustained performance and reliability in various scenarios, offering peace of mind for extended usage.



Neck and shoulder massage pillow JKAH-3C

The device is designed to stretch and relax the cervical spine and shoulder. The appearance design is based on the physiological curve of the human cervical spine. This product features a carefully selected slow rebound pillow core, silent air pump, and graphenic heating material. Through heating therapy, air compression massage and neck lifting exercise functions, blood circulation in the shoulder and neck area is accelerated, neck muscles are relaxed, and the neck is well exercised.

MAIN PARAMETERS:

Output	Power	Charging Voltage	Charging Current	Battery Capacity
3.7W	7W	5V	2A	2000mah

More configurations and colors customization (MOQ required)





Heating therapy

Using Graphene far-infrared heating, which can penetrate deep into the skin, produce a warm effect, provide constant temperature heating therapy, helps to promote blood circulation and relax neck muscles.



Neck lifting exercise

The product features an ergonomic design with raised sides to securely support the head and cervical vertebrae. It uses a slow-rebound memory foam core and skin-friendly fabric. The self-gravity of the head allows it to sink into the pillow, creating a comfortable massage environment. Through process of the airbags, the product is flipped at the bottom to drive the stretching and traction of the neck, relaxing the neck muscles.

PRODUCT DETAILS



Slow rebound pillow core



Built in lithium battery, rechargeable



Air compression massage

With the silent air pump, the hidden airbags on the shoulder will slowly inflate, simulate gentle massage techniques, soothing the shoulder muscles. At the same time, it provides vertical force for the bottom airbag lifting function, making neck lifting exercises more effective.

Cervical Care Device

JKAH-3

ALPHAY's cervical care device is a excellent domestic physiotherapy equipment, which is integrated function of smart electrical impulse, heating, intelligent air traction, magnetic effect. We try to provide a comfortable condition to your cervical vertebra, to train the neck in correct posture. It's applicable to different people, and makes people enjoy with different user experience.



MAIN PARAMETERS:

Material	Color	Power	Main Voltage	Current
ABS+PC+Silicone	Black or customized	12W	12v $\overline{=}$	1A

More configurations and colors customization (MOQ required)





Dynamic Neck Traction

Our neck massager achieves to three different continuous round-trip lifting. The whole massager can driving stiff neck bone up to 10cm. We have three rhythmic automatic modes, namely the comfortable relaxation mode, the enhanced push pull mode and the active bone-and-bone mode, which can meet the requirements of different users.



Low-frequency impulse

Electrical stimulation, 3-5 centimeter Deep into the skin and soothe the swelling of the cervical spine. The underlying principle is relieve pain by stimulating nerve cell viability. We also name it as "Low-frequency impulse electrotherapy". The product can be externally connected to the electric pulse patch, make massage experience for all your body.



Heating Therapy

Through warm and hot compress, our neck massager can relieve muscle stiffness, make muscles relax and comfortable, and relieve soreness and fatigue. Intelligent constant temperature can accelerate blood flow, remove cold and wet in your neck. Increase heating while traction, the effect will be better.



External electrotherapy pads

Plug into the device and place them on any place of your body. Enjoy the full body massage.

Smart Neck Massager

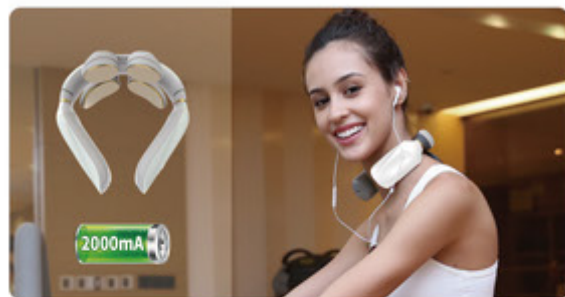
JKAH-5

Enjoy the time of this 15 minutes, to be your relaxing moments in busy life. Soothe the tired, and love yourself by the most comfortable way. Then enjoy the world with full of vitality.



MAIN PARAMETERS:

Material	Size	Color	Host battery	Current	Main power
ABS+PC	S:105X130.5MM L:123X146.5MM	White or customized	3.7V 2000MAH	5V = 1A	5W



Large capacity battery with ultra-long battery life

It adopts a 2000mAh lithium battery to solve battery life anxiety, completely release your freedom, and provide massage anywhere during traveling, business trips, or walks, relieving your neck fatigue.



Four-wheel contact electronic pulse massage

Through a reasonable program setting, it can achieve more massage combinations and vividly simulate the masseur's techniques of light and heavy pressure, thus significantly improving the user's experience.



Adjustable temperature with double heating area

Appropriate continuous heating of the skin can achieve the effect of locally relaxing muscles, expanding blood vessels, and promoting blood circulation. The four contact points make the heating area double that of traditional two-contact point products.



External large contact area massage patch

It can be used with an external large contact area massage patch, so that other parts of the body can also enjoy the massage pleasure while massaging the neck, such as the knees, abdomen, back, legs, etc.



Airwave Joint Massager

JKAH-1G

The new generation Airwave Joint Massager adopts intelligent control, equipped with airbag kneading, multi-point massage, and combines thermal and vibration massage functions; it also features a 3D wrap-around design for the knee and leg area, which provides better insulation. With the thigh and calf as the fulcrum, it uses the central connecting part to maintain support and reduce the pressure on the knee joint, allowing the knee to stay relaxed. It is suitable for people of different body types.

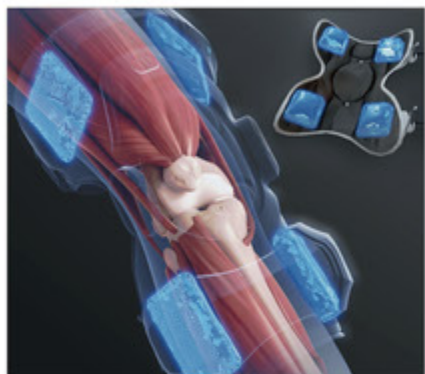


MAIN PARAMETERS:

Material	Color	Current	Power	Voltage
PC+ABS	Grey or customized	2A	24W	12V ===

More color customization available (minimum order quantity required)





Breath-powered dynamic air pressure massage

Simulating muscle aerobic exercise, this massage technique uses slow breathing frequency to squeeze the muscles around the joints. It surrounds a large area in three dimensions, alternately presses, and relaxes the muscle groups around the joints from multiple directions.



Multi-frequency vibration massage

This massage technique soothes joint fatigue and stimulates deep muscles. It quickly relieves knee pain through three levels of vibration modes. Controlled by a smart chip, users can choose from weak, strong, and mixed vibration modes according to their needs.



Three-level adjustable heating

There are 5 heating areas that can be applied to the painful area for thermal therapy, which helps to relieve pain and promote the absorption of fluid. The temperature is adjustable, and it has a particularly good effect on relieving pain caused by arthritis and cold legs.

APPLICABLE BODY PARTS



Shoulders



Elbows



Knees

Knee Care Massager

JKAH-1 / JKAH-1/S

The double knee care device is improved and upgraded on the basis of the single knee care device. The purpose is to allow two knees to be massaged at the same time, or multiple people can use it at the same time. In addition, we have equipped it with external electrodes, which can massage other parts of the body while massaging the knees.



MAIN PARAMETERS:

Material	Colour	Main Voltage	Voltage	Power
ABS, TPU	Blue or customized	JKAH-1 2A JKAH-1/S 3A	12V ⁼⁼	JKAH-1 24W JKAH-1/S 36W

More configurations and colors customization (MOQ required)



Red



White



Double Motor Vibrating Massage

The excellent design of vibratory massage system can let your knee be wrapped by soft and comfortable power quickly to relieve your knee pain. We used double motor to get the appropriate frequency which can activate your knee point perfectly. You can feel a healthy life brought by technology home.

Applicable body parts



SHOULDER



ELBOW



KNEE



Adjustable Temperature Heating

We combine color light system and heat therapy system to provide a continuous flow of heat to your joint, which make your joint enjoy the warmth like sun-light. (By pulling the flank outwards, the joint pain relief machine massager can be adapted to different size shoulder, knee and elbow joints).

New function added to the double knee massager

External pulse patches for full body massage
We have equipped the device with external pulse patches, which can be placed on other parts of the body while massaging the knee joints, allowing for a full body massage.



MEDICAL DEVICE SERIES



Neck Support

JGAH-5

This device is designed for neck support and protector. The main purpose is keep you away from a phubber, making the neck in correct posture with cervical vertebra decompression, and protecting the cervical vertebra finally. Shell color can be customized, you can wear it not only as a neck protector, but also a fashionable accessory.



MAIN PARAMETERS:

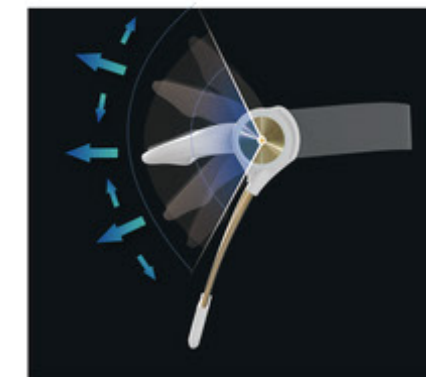
Main body material	Rear strap	Lower support
PA6+GF30 +space aluminum	Imported ultra-fiber fabric	Food-grade silicone

More configurations and colors customization (MOQ required)



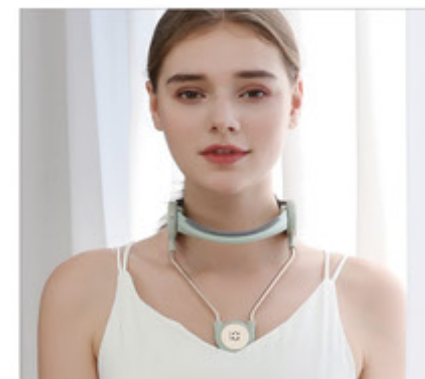
Scientific neck support

Designed according to the natural curvature of the human neck, the 7-shaped ergonomic design helps to support the cervical spine and reduce neck pressure. It is an adjustable and easy-to-use neck support that is lightweight, effective, simple, and stylish.



Multiple adjustable levels

The product has multiple adjustable levels with a 120-degree angle that can be adjusted according to different needs.



Keep good posture

Improving forward head posture and lifting your chin and chest are interrelated actions. As you correct your neck posture, symptoms of hunchback will also improve. By wearing this device consistently, you can develop good posture habits and regain your graceful and confident demeanor.



Lightweight and easy to carry

It can be placed anywhere, such as a small bag or travel bag. It can be used in different environments such as work, home, walking, travel, fitness, and leisure time, and can be used anytime, anywhere, including while traveling.



Neck Traction Device

JGAH-2F

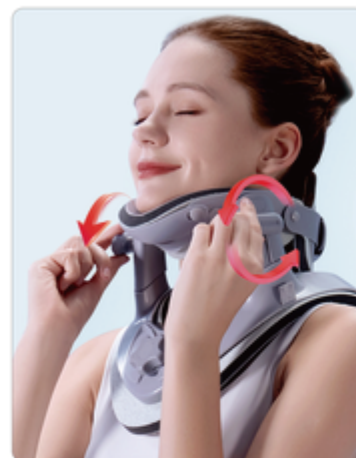
This device is a class 2 medical device, suitable for the treatment of cervical spondylosis, nerve root cervical spondylosis, cervical back myofascial inflammation, cervical disc herniation and other cervical spondylosis, as well as auxiliary fixation after cervical spine surgery.



MAIN PARAMETERS:

Material	plastic, sponge
Color	black
Traction height	4.2±0.5cm
Adjustable size of the front knob	0-2.8±0.5cm
The maximum adjustable size of the back knob	40.1±1cm
The minimum adjustable size of the back knob	25.7±1cm

More configurations and colors customization (MOQ required)



The knob with five gears on the both sides can be used to adjust the height of the cervical spine when pushing it up.



Stabilize the cervical spine by using the driving pressure of locking and fixing the back of the neck.



The front adjustable width pad can increase the usable neck circumference, reduce pressure on the chest, and improve traction accuracy.



Upgraded sponge pad, tested for biocompatibility, cares for the skin.



Neck Traction Device

JGAH-2E

This device is a class 2 medical device, suitable for the treatment of cervical spondylosis, nerve root cervical spondylosis, cervical back myofascial inflammation, cervical disc herniation and other cervical spondylosis, as well as auxiliary fixation after cervical spine surgery.



MAIN PARAMETERS:

Material	plastic, sponge
Color	black
Traction height	4.2±0.5cm
The maximum adjustable size of the back knob	40.1±1cm
The minimum adjustable size of the back knob	25.7±1cm

More configurations and colors customization (MOQ required)



The five gear knobs on both sides can be used to adjust the height of the cervical spine when pushing it up.



Stabilize the cervical spine by using the driving pressure of locking and fixing the back of the neck.



DETAILS



Upgraded sponge pad, tested for biocompatibility, cares for the skin



The widened flexible pad reduces compression on the chest and enhances comfort



Neck Traction Device

JQAH-6 / JQAH-8

This product is a Class II medical device registered with the National Medical Products Administration. The product is suitable for the treatment of cervical radiculopathy, pre-back muscle fasciitis, and pre-herniated cervical disc, as well as an auxiliary external fixation for cervical spine surgery.



MAIN PARAMETERS:

Main Structure	Inflatable structure
Inflation Pressure	0.08MPA~015MPA
Surface Material	Cotton fabric and PU leather
Internal	TPU film
Bracket	Plastic injection molding, cotton pad made of cloth and sponge pressed together

More configurations and colors customization (MOQ required)



Neck back locking fixation

The device has been granted the invention patent number ZL201310216970.0. It can alleviate neck pain and ensure correct curvature traction.



The tighter the lock, the better the traction effect. If it's loose, it cannot achieve traction.



Simultaneously lifting knobs with five adjustable levels to promote cervical spine.

The device with the invention patent number ZL201310216970.0 can alleviate neck pain and ensure correct traction curvature.



Simultaneously lifting with both hands can stretch the cervical spine. A single knob can only lift the head and cannot have an effect on the cervical spine.



Inflatable pressure supports and curves the cervical spine

With 8 built-in air columns, the airbag generates a curved traction force to open the cervical gap, stretch the neck, and relieve compression.



Electric inflation and uniform pressure

One-button inflation, air column evenly wraps around the cervical spine. Ensure the traction curvature



Neck Traction Device

JQAH-3B / JQAH-4B

This product is a Class II medical device registered with the National Medical Products Administration of China. The product is suitable for the treatment of cervical spondylosis, cervical muscle fasciitis, cervical disc herniation and other cervical spine diseases, as well as for assisting in external fixation after cervical spine surgery.



PARAMETERS

Main Structure	Inflatable structure
Inflation pressure	0.08MPA-0.15MPA
Surface material	Cotton fabric and PU leather
Internal material	TPU film
Support frame	Plastic injection molding, cotton padding made of fabric and compressed sponge.

More configurations and colors customization (MOQ required)

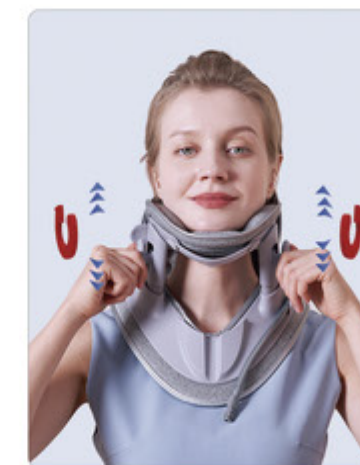


Neck back locking fixation

The device has been granted the invention patent number ZL201310216970.0. It can alleviate neck pain and ensure correct curvature traction.

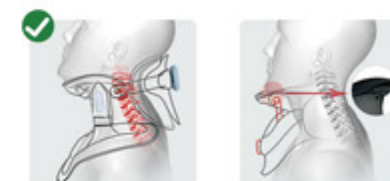


The tighter the lock, the better the traction effect. If it's loose, it cannot achieve traction.

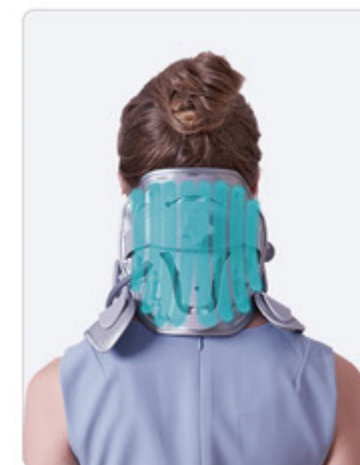


Simultaneously lifting knobs with five adjustable levels to promote cervical spine.

The device with the invention patent number ZL201310216970.0 can alleviate neck pain and ensure correct traction curvature.



Simultaneously lifting with both hands can stretch the cervical spine. A single knob can only lift the head and cannot have an effect on the cervical spine.



Inflatable pressure supports and curves the cervical spine

With 8 built-in air columns, the airbag generates a curved traction force to open the cervical gap, stretch the neck, and relieve compression.



Three-dimensional dynamic traction

By supporting the chin with the front bracket, the head is in a natural backward position, and the cervical spine will show a natural curvature. The rear airbag supports the cervical and back, and drags the occiput upward to achieve the effect of pulling the intervertebral space open.



Elastic fabric belt

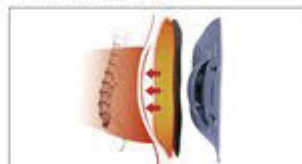


Mesh fabric belt

Back Support Belt

YGAH-6 / YGAH-8

Compare to traditional back support belts, ALPHAY's new invented back support belt YGAH-6 shows the different looking and more powerful features as:



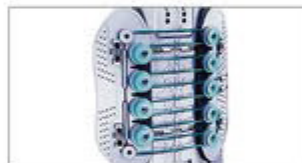
The Big back support plate, increase the support stressing area, make the spine more comfortable.



A curved support bar is designed on the inside, which will exert pressure on the lumbar posture. Users can adjust the curvature to change the pressure level.



There are elastic wings on both sides of the belt, which can be adjusted according to the waist circumference to protect the soft side waist when the belt is tightened, providing a more comfortable experience.



An innovative unidirectional rope sliding system that is more convenient and labor-saving to use.



The unique feature of YGAH-8 is that it replaces the elastic fabric of YGAH-6 with a higher hardness mesh fabric. Additionally, a "sleeve-like" design has been added to the end of the waist belt. By adjusting the position of the "sleeve," the length of the waist belt can be changed, making it suitable for people with various waist sizes.

Air Traction Belt

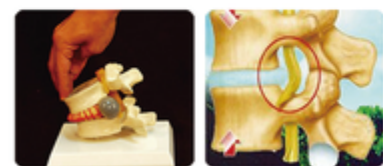
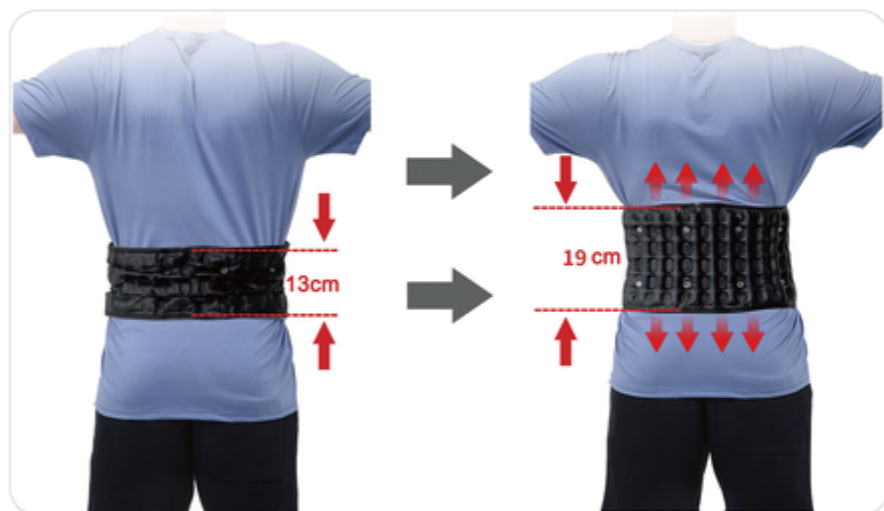
YGAH-9

The product is registered as a Class I medical device in the country. It is suitable for assisting in the fixation of non-displaced spinal fractures, tube stenosis, and degenerative spinal diseases after surgery.

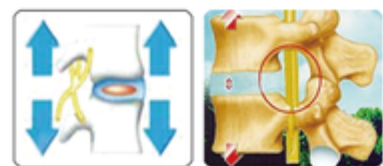


How does the Air Traction Belt Work?

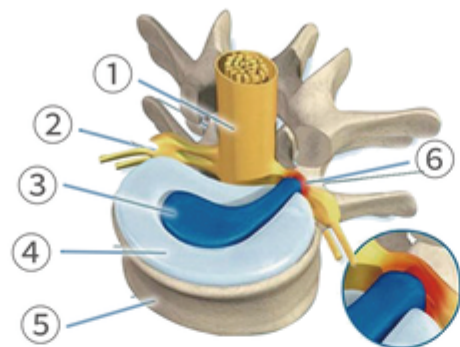
The ALPHAY decompression belt is a USA patented device designed to gently lift the users torso by means of vertical air columns. The ALPHAY belt is light weight, thin and easy to use. ALPHAY decompression system allows mobility and stabilization of the back to help alleviate pain and prevent injuries. It may be worn under clothing to allow performance of daily activities such as driving, walking, and standing for extended periods of time. Active lifestyles, including sports and leisure activities, may be enjoyed using the ALPHAY belt.



Before inflation



After inflation



- ① Spinal ② Spinal nerve root ③ Nucleus pulposus
- ④ Fibrous ring ⑤ Vertebral body
- ⑥ Herniation of the nucleus pulposus oppressive nerve root



Air Traction Belt

YGAH-1 / YGAH-2 / YGAH-3

The product is registered as a Class II medical device in the country and is suitable for traction therapy for patients with lumbar spine diseases.



The lumbar Decompression belt's unique and patented spinal airtraction design is thin, lightweight and easy to use; it offers a high degree of mobility, alleviating and preventing back pain.

It can be discreetly worn under clothing allowing you to perform daily activities such as driving, walking and standing for long periods of time, and enabling those with an active lifestyle to work, enjoy sports and other leisure activities pain-free.





YGAH-1

Classic mode, easy to use and available in 6 sizes for the widest range of people.



YGAH-1

Front and rear guards -according to US medical insurance requirements. The guards provides larger lumbar support area, reducing the pressure on the lumbar vertebrae. It focus on protecting the C4 and C5 vertebrae, where lumbar spondylosis often occurs.



YGAH-2

Wider than other models after inflation. The traction area is larger. It is more suitable for taller people with longer lumbar lengths.



YGAH-3

The unique drawstring system makes the belt perfectly fit people's body, which achieves a better traction effect. The only air traction belt with a protective cover rope design on the market. It is more fashionable.